

## How to Update the Wattbike Performance Computer Firmware

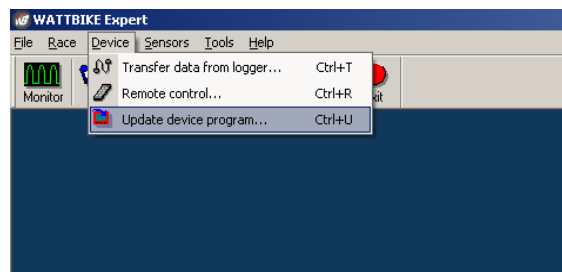
1. Save the Firmware update file to file on your PC (obtained from the Wattbike Download Centre) to your PC

[http://www.wattbike.com/uk/wattbike/the\\_expert\\_software/software\\_download/](http://www.wattbike.com/uk/wattbike/the_expert_software/software_download/)

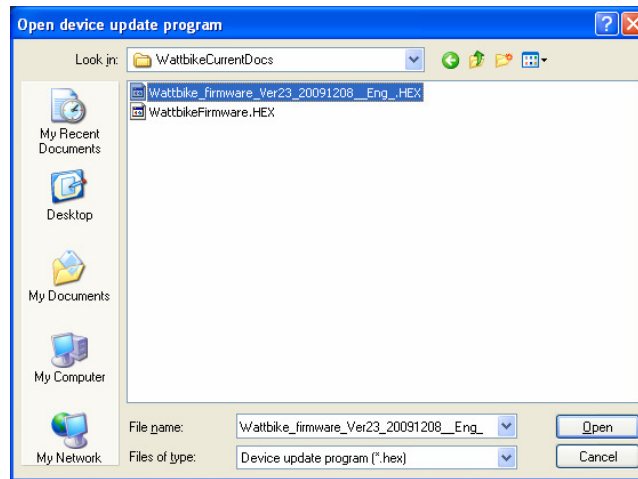
2. Save any sessions that are stored in the **Memory** to Wattbike Expert if you need to keep them as the update process will clear the **Performance Computer Memory**
3. During the update process the **Performance Computer** will switch on – this is normal – do not use the **Performance Computer** buttons until the update process has been completed
4. Open **Wattbike Expert Software**
5. Click on the **'X'** next to **'Exit'** to clear the Welcome screen



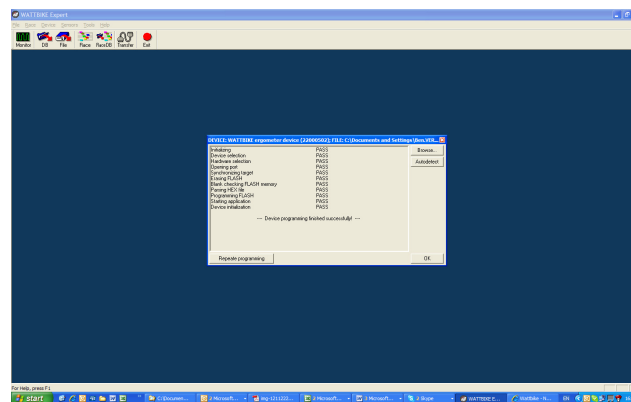
6. Attach a USB cable to the PC and the USB connection on the back of the **Performance Computer**
7. Press **ENTER** and the **ON** button together on the **Performance Computer** – a grey margin should appear on the **Performance Computer** display
8. In **Wattbike Expert Software** at the top of the screen - from the **'Menu bar'** choose **'Device'** and **'Update device program ...'**



9. If the software does not recognize the **Performance Computer** disconnect and reconnect the USB cable
10. **'Open device update program'** window will open



11. Find the saved Firmware update file from file (**'Device update program [\* .hex]'**)
12. Select the file and click **'Open'** – the update will start automatically
13. When the update is completed the **'Device'** window will show:



**...Device programming finished successfully! ....**

14. Disconnect the USB cable
15. Your updated **Performance Computer** is ready to use